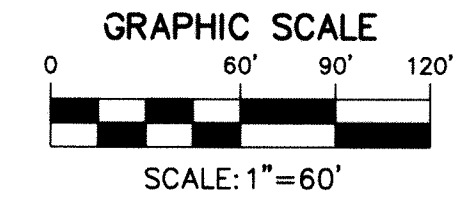
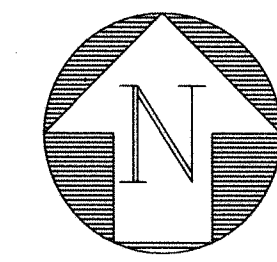


TUTTLE ROYALE

BEING A REPLAT OF SHOPPES AT VILLAGE ROYALE AS RECORDED IN PLAT BOOK 124, PAGES 68 THROUGH 71, PUBLIC RECORDS OF PALM BEACH COUNTY, FLORIDA AND BEING A REPLAT OF A PORTION OF THE PLAT OF PALM BEACH FARMS PLAT NO.3 AS RECORDED IN PLAT BOOK 2, PAGES 45 THROUGH 54, PUBLIC RECORDS OF PALM BEACH COUNTY, FLORIDA AND LYING IN A PORTION OF SECTION 36, TOWNSHIP 43 SOUTH, RANGE 41 EAST, AND SECTION 1, TOWNSHIP 44 SOUTH, RANGE 41 EAST, THE VILLAGE OF ROYAL PALM BEACH, PALM BEACH COUNTY, FLORIDA
 DECEMBER 2021
 SHEET 8 OF 13



STATE OF FLORIDA
 COUNTY OF PALM BEACH

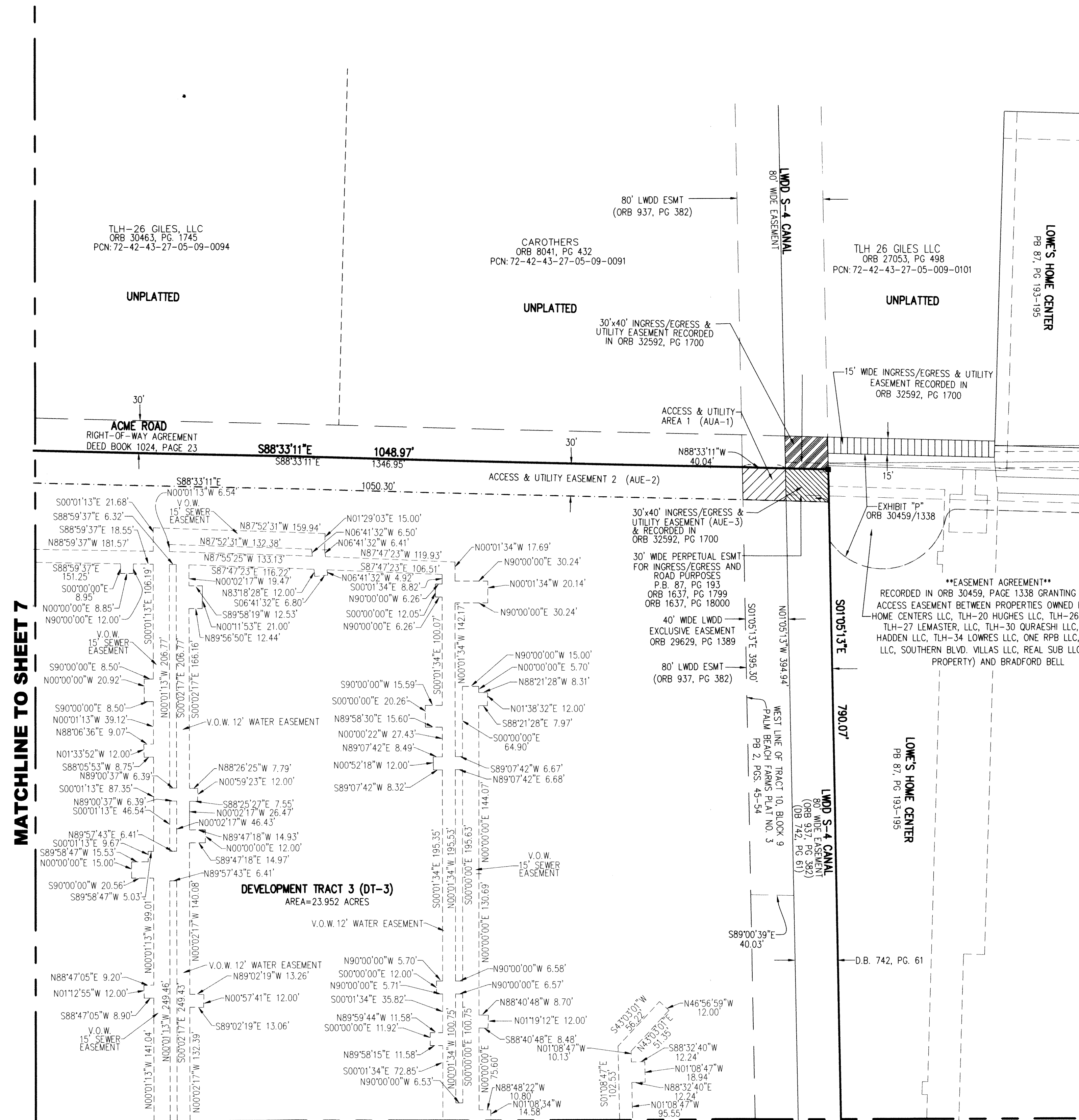
THIS PLAT WAS FILED FOR
 RECORD AT _____

THIS _____ DAY OF _____
 AND DULY RECORDED
 IN PLAT BOOK NO. _____
 ON PAGE(S) _____

JOSEPH ABRUZZO,
 CLERK AND CIRCUIT COURT &
 COMPTROLLER

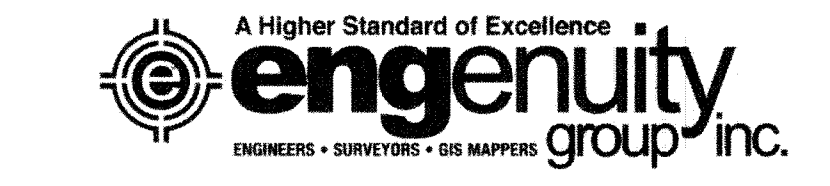
BY: _____
 DEPUTY CLERK

108



LEGEND

- ⊙ CENTERLINE
- LWDD LAKE WORTH DRAINAGE DISTRICT
- ORB OFFICIAL RECORD BOOK
- SFWM SOUTH FLORIDA WATER MANAGEMENT DISTRICT
- P.B. PLAT BOOK
- PG.(S) PAGE(S)
- R/W RIGHT-OF-WAY
- SET 4" X 4" CONCRETE MONUMENT WITH ALUMINUM DISK STAMPED P.R.M. LB#6603
- FOUND PERMANENT REFERENCE MONUMENT AS NOTED
- SET MAG NAIL AND DISK PCP LB#6603
- R RADIUS
- L ARC LENGTH
- Δ DELTA ANGLE
- D.B. DEED BOOK
- LB LICENSED BUSINESS
- PRM PERMANENT REFERENCE MONUMENT
- PCP PERMANENT CONTROL POINT
- ESMT EASEMENT
- V.O.W. VILLAGE OF WELLINGTON
- PRT PRIVATE RECREATION TRACT



1280 N. CONGRESS AVENUE, SUITE 101,
 WEST PALM BEACH, FLORIDA 33409
 PH (561) 655-1151 • FAX (561) 832-9390
 WWW.ENGUITYGROUP.COM

TUTTLE ROYALE

DATE	2/2/2022
SCALE	1"=60'
CAD FILE	13037.96 MASTER PLAT
SISK PROJECT	13037.04 SR 80 RPB ADD.
DRAWN	STAFF
CHECKED	STAFF

SHEET	8/13
	JOB NO. 13037.96

Y:\Land Projects R2\13037.04 SR 80 Royal Palm Beach Addition.dwg\13037.96 Master Plat March 2022 updated dedication #3.dwg 3/1/2022 6:48:56 PM EST

MATCHLINE TO SHEET 7

MATCHLINE TO SHEET 11